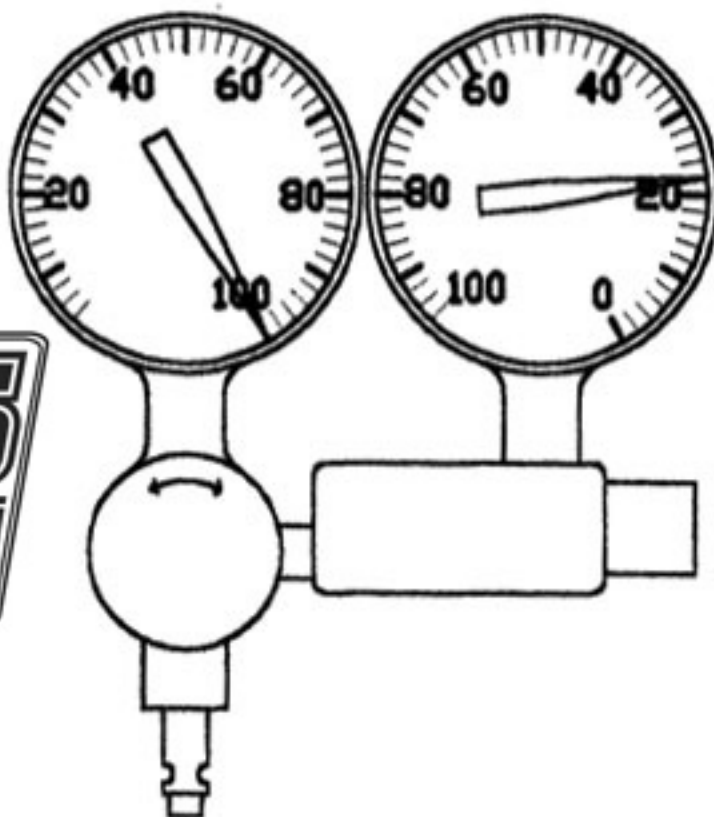


# LEAK DOWN PROCEDURES



## STEPS:

1. SET BUTTERFLY OPENING WITH FEELER GAUGES! (TOILETS .010-.012) (TERMINATORS .004-.006)
2. TURN REGULATOR ADJUSTING KNOB "CCW" UNTIL IT STOPS THEN CONNECT TO AIR SUPPLY MIN. 100 PSI
3. DISCONNECT "RETURN" LINE FROM B.V. AND PUT A CAP ON FITTING
4. DISCONNECT FUEL LINE "IN" ON B.V. AND CONNECT HOSE FROM LEAK DOWN TESTER
5. TURN FUEL SHUT-OFF TO THE "ON" POSITION ON THE B.V.
6. ADJUST KNOB ON REGULATOR "CW" UNTIL THE GAUGE ON THE LEFT READS 100 PSI. THEN READ THE GAUGE ON THE RIGHT, IT IS IN 2% GRADUATIONS. (SAMPLE ABOVE READS (LEFT GAUGE 100 PSI, RIGHT GAUGE 22%) THIS EQUALS 22% LEAK DOWN ON BARREL VALVE.
7. ADJUST LEAK BY TURNING CONNECTING LINK THATS CONNECTED TO B.V. FOR INITIAL STARTING POINT SET PURPLE B.V. TO 28-30%, GREY B.V. 20-24%

NOTES: WHEN YOU ADJUST BUTTERFLY OPENING YOU ARE ALSO CHANGING LEAK ON THE BARREL VALVE. WHEN YOU OPEN THROTTLE TO WIDE OPEN THE GAUGE ON THE RIGHT WILL MOVE TOWARD 100%.